

**CLOUD8** Designs, L.L.C.  
a better view

336-684-8133  
4831 Homestead Dr.  
Mebane, NC 27302

# A Better View

## Why Cloud 8?

Everyone knows about "Cloud 9".  
At Cloud8, we are a little smaller, a little more accessible and we have  
**A BETTER VIEW.**

This view is based on our background designing for companies that are the leaders in their industries. It is experience with million dollar design budgets and budgets that fit our client's requirements. It is that experience combined with this philosophy:

**"It's all about getting out the message, the story, in a way that captures your audience by their emotions and their imaginations."**

We reach your unique audience by blending your story with the excitement of our visual presentation. We believe that story is always about people and emotion and life.

**At Cloud8 Designs, we discover the past, live the future and explore today. We celebrate success, lead through inspiration, and treasure the magic of play.**

## That is A Better View!



the wizard of oz  
official educational traveling exhibit

the power of me  
delaware children's museum

hubble exhibit  
kennedy space center

**Cloud8 Designs specializes in three areas:  
Exhibit Development & Design,  
Event Design and  
Live Entertainment Design.**

We are as comfortable within a museum setting as we are in a corporate boardroom or a major theme park. We enjoy designing for groups as far ranging as The Baltimore Ravens, Busch Entertainment, Hilton Hotels, Google, Norwegian Cruise Lines and Kennedy Space Center.

**We have a different perspective at Cloud8 Designs and we would love to show that to you!**



# Exhibit Portfolio: Children's

## Delaware Children's Museum

Areas: The Power of Me!, Bank On It!, EConnect and Training Wheels.  
Wilmington, DE – opened April, 2010



Delaware Children's Museum represents our largest museum/exhibit project to date. We designed and developed four major areas: "The Power of Me!" provides guests with information and physical activities based around good nutrition and the human body. "Bank On It!" has a number of interactive media stations as well as a full lemonaid stand, bank vault and stock market activity. "EConnect" is hosted by Ossum Otter. Here our guests can become otter spotters searching for various wildlife and plants found in and around Delaware. We range from the forests through the meadows and wetlands and onto the beautiful coastlines. Finally we have our toddler area, "Training Wheels." This room is themed around various forms of fun, kid-friendly modes of transportation. All aspects of the museum were developed with both the family and the classroom fieldtrip in mind. It is a great blend of education and fun!



exhibit photographs



# Exhibit Portfolio: Children's

## Delaware Children's Museum



The Power of Me!  
exhibit photographs



# Exhibit Portfolio: Children's

Delaware Children's Museum



Bank On It!  
exhibit photographs



**CLOUD8** Designs, L.L.C.  
a better view

4831 HOMESTEAD DRIVE  
MEBANE, NC 27302  
336-684-8133  
EMAIL: RHARRIS@CLOUD8DESIGNS.COM  
WWW.CLOUD8DESIGNS.COM



# Exhibit Portfolio: Children's

## Delaware Children's Museum



EConnect  
exhibit photographs



# Exhibit Portfolio: Children's

## The Official *Wizard of Oz* Educational Touring Exhibit

National Tour  
Miami, Florida – opened January, 2010

The Wizard of Oz™ traveling exhibit utilizes the arts, science and physical challenge to create values-based lessons from the beloved American classic film *The Wizard of Oz*™. The exhibit invites guests of all ages to embark on an exploration of the Land of Oz and, along the way, engage in a journey of discovering personal values and strengths. Guests pass through a classic theatre marquee and lobby into the movie itself! In the Land of Oz, guests explore Munchkinland, Crossroads, the Wicked Witch's Castle, and Emerald City.

The primary focus of each area is:

- Marquee Entrance—Introduction to the Movie
- Gale Farm—Farming, Nature and Illusion
- Munchkinland—The Arts
- Crossroads—Personal Strengths and Values
- Wicked Witch's Castle—Physical Challenge
- Emerald City—Light, Wonder and Science



exhibit photograph



exhibit rendering



# Exhibit Portfolio: Children's

## The Official *Wizard of Oz* Educational Touring Exhibit

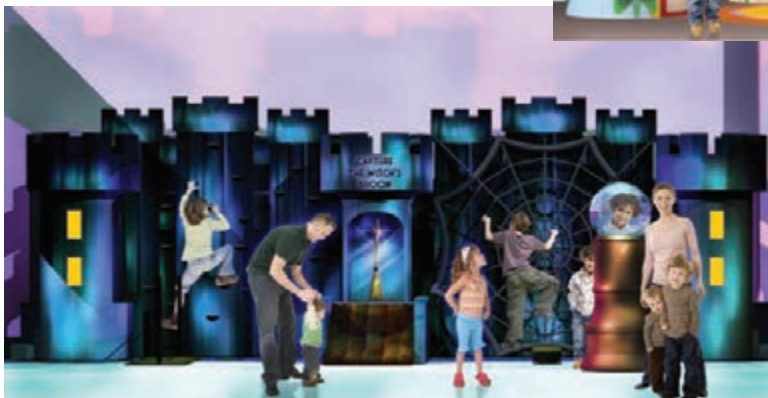


exhibit entrance

exhibit renderings



munchkinland



wicked witch's castle



emerald city



# Exhibit Portfolio: Children's

## The Official *Wizard of Oz* Educational Touring Exhibit



the scarecrow movie moment graphic



scarecrow interactive



crossroads rendering

# Exhibit Portfolio: Science

## Eye on the Universe: The Hubble Space Telescope

Kennedy Space Center Visitor Complex  
Orsino, Florida – opened October, 2008

The "Eye on the Universe" exhibit presents a unique and visually stunning combination of the science and the art of the Hubble Telescope. Our goal was to create a dramatic experience that both inspires guests of all ages and educates them to the scientific advances this important mission has and continues to provide.



exhibit photograph

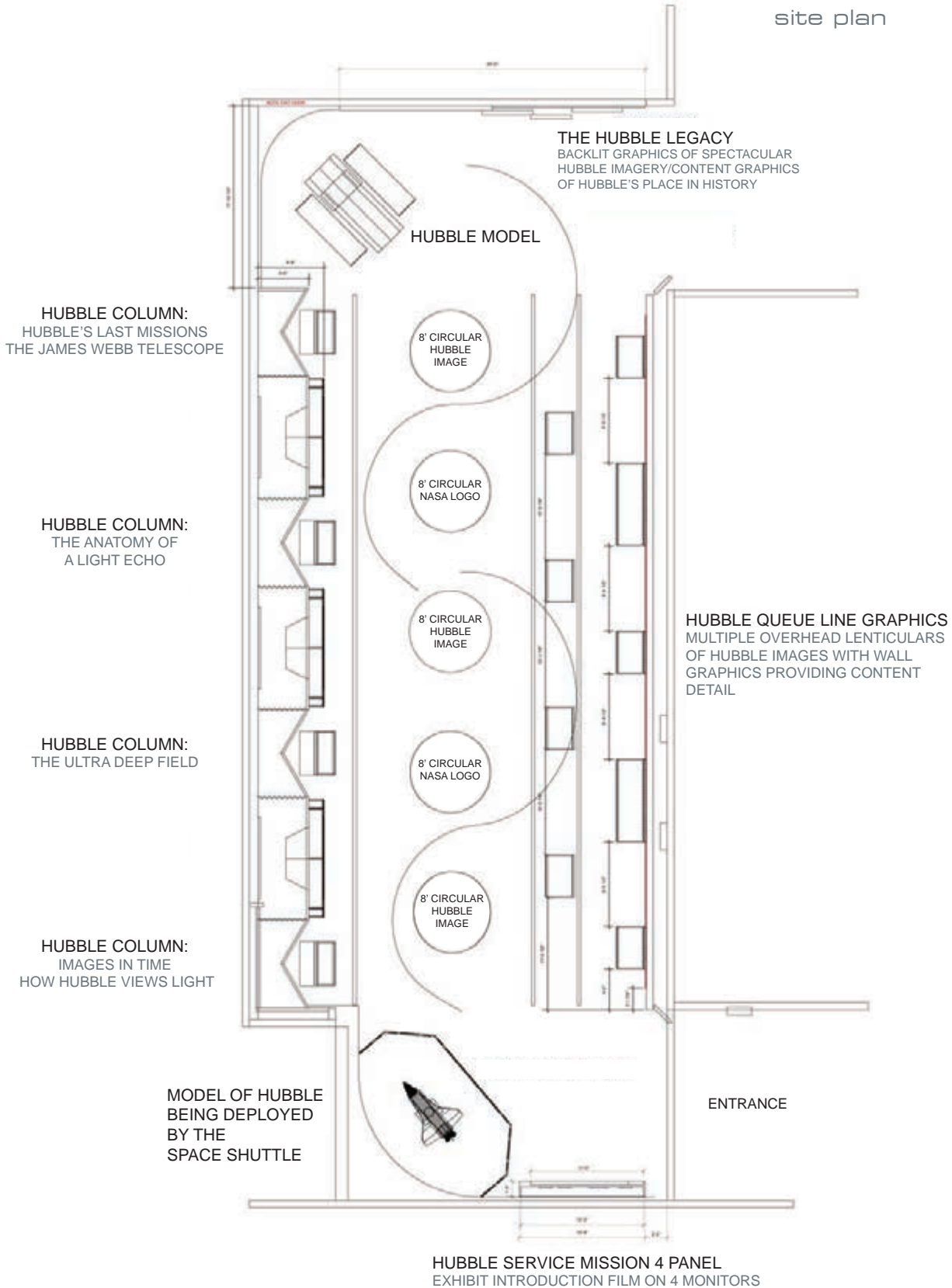


exhibit photograph



# Exhibit Portfolio: Science

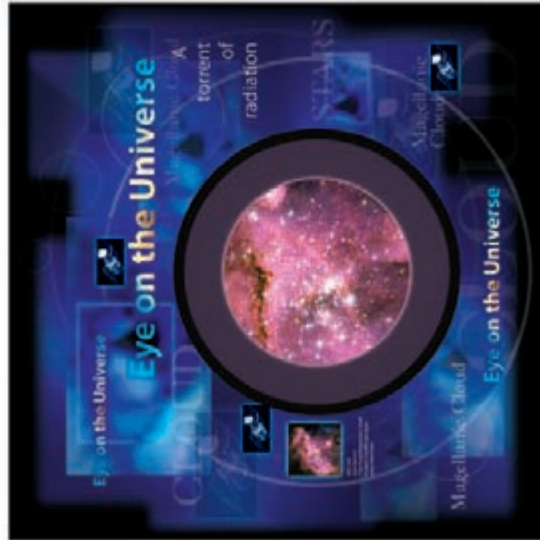
## Eye on the Universe: The Hubble Space Telescope



# Exhibit Portfolio: Science

## Eye on the Universe: The Hubble Space Telescope

exhibit stations with graphics



magellanic cloud



martian dust storm



the cone nebula

4831 HOMESTEAD DRIVE  
MEBANE, NC 27302  
336-684-8133  
EMAIL: RHARRIS@CLOUD8DESIGNS.COM  
WWW.CLOUD8DESIGNS.COM

**CLOUD8** DESIGNS, L.L.C.  
a better view



# Exhibit Portfolio: Science

## Eye on the Universe: The Hubble Space Telescope



exhibit graphics



# Exhibit Portfolio: Science

## The Space Shuttle Columbia Fifth Anniversary Exhibit

NASA/Traveling Exhibit  
Most NASA facilities across the U.S. – February, 2008

This exhibit was both a tribute to the crew and family of the Space Shuttle Columbia and a reminder to all members of the NASA family of the true responsibility at hand. "Safety is everyone's responsibility."

In the world of space exploration, those words take on a magnitude beyond most people's comprehension. As the thrusters ignite during a shuttle launch, the crew's lives are literally in the hands of everyone that have touched that mission. NASA understands this. This is a company "built on a deeply rooted commitment to safety and quality in all aspects of its work."

This touring exhibit was both a commitment to those qualities and an opportunity to inspire all members of a community whose dreams and experience carry us to our future. Space flight is the embodiment of the courage that dreams require.



exhibit case renderings



Holding actual pieces of the Space Shuttle Columbia in our hands during the creation of this exhibit was one of the most moving moments of our lives.

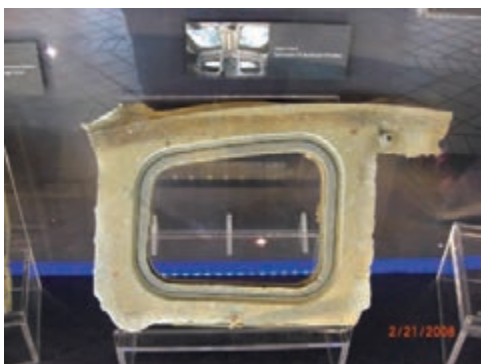


# Exhibit Portfolio: Science

## The Space Shuttle Columbia Fifth Anniversary Exhibit



computer model of case interior with exhibit objects and labels



photographs of exhibit front view

# Exhibit Portfolio: Science

## The Space Shuttle Columbia Fifth Anniversary Exhibit



photographs of exhibit back view



exhibit graphic



# Robert W. Harris

## Owner and Creative Director for Cloud8 Designs

During his thirty plus years of experience, Robert has developed both national and international exhibits, events and live show designs. He has designed for museums, corporate welcome centers, trade shows, theatres, theme parks, cruise lines, live concerts and television. Robert spent ten years of his career as the entertainment scenic designer for SeaWorld of Orlando, There he was responsible for the look of the live shows, events, and television specials found in the park.

Since forming his own company, Robert's work includes designs for Delaware Children's Museum, NASA, Miami Children's Museum Universal Studios, Busch Gardens, The Baltimore Ravens, Johns Hopkins University, The NAACP, Mary Queen of the Universe Shrine, Fantasy of Flight and BenRoss International Productions.

Robert holds a B.S. in Education, an M.F.A. in Theatre Design and a professional certificate in Museum Design and Planning from Georgetown University. While at Georgetown, he studied under one of the Smithsonian's leading American History Museum designers. He is a member of the American Association of Museums and the National Association for Museum Exhibition.

With this diverse background, Robert brings a strong sense of storyline development, project management and visual appeal and excitement to all of his designs.



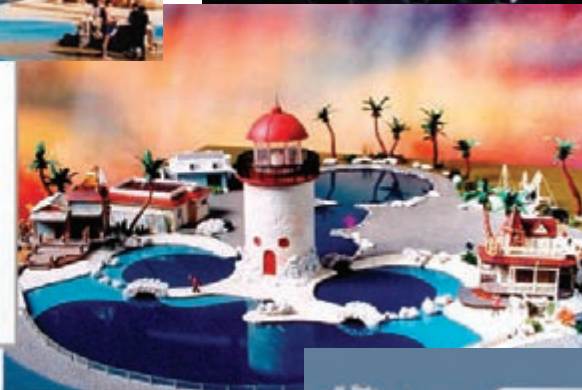
### SeaWorld Designs



clyde & seamore take pirate island



whale & dolphin show



the titanic exhibit proposal

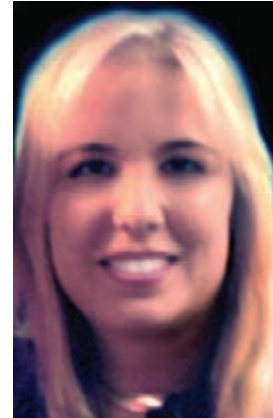
# Amanda I. Lewis

Art Director for Cloud8 Designs

Amanda brings a rare combination of talent, management skills and positive energy to each and every project she directs. She is a driving force for maintaining schedules, content details and overall artistic style.

As a partner with Cloud8 Designs, she is responsible for the graphic look and creation of our major exhibits. Amanda's style can be seen at Kennedy Space Center's Visitor's Complex, Delaware Children's Museum, Miami Children's Museum, Federated Insurance's Next Generation Corporate Center, 3M's Corporate Center and many others. She also is responsible for many of the training materials created for FlightSafety International.

Amanda holds a B.F.A. in Visual Arts graduating Summa Cum Laude from Armstrong Atlantic State University. She also has earned a drafting diploma and CATIA certification. She is a member of the Phi Kappa Phi Honor Society, American Association of Museums and the National Association for Museum Exhibition.



hubble exhibit graphic  
Kennedy Space Center



nature area graphics  
Delaware Childrens Museum



graphic for Federated Insurance